



*Park Lane*  
APARTMENTS & TOWNHOMES



# COMMUNITY *Amenities*

- 24-Hour State-of-the-Art Fitness Center
- Swimming Pool with Lap Lanes and Heated Spa
- Spacious Clubhouse with Fully Equipped Kitchen for Private Parties
- Sports Lounge with Billiards
- Indoor Basketball Court
- Dog Park
- Playground, Jogging Trail and Scenic Bike Path
- Fully Lit Tennis Courts
- On Site Retail Village



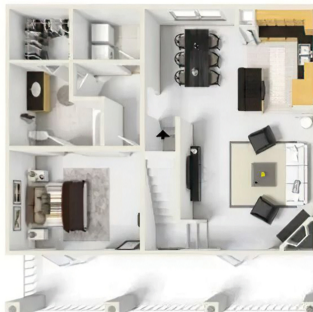
# APARTMENT *Features*

- Exceptional Choice of Floor Plans
- Attached Bathroom to Every Bedroom
- Black Appliance Package
- Vaulted or 9' Ceilings with Fans
- Full Size Washer/Dryer
- Ceramic Tile in Bathroom, Kitchen, and Foyer
- Large Walk In Closets
- French Doors to Private Patio/Balcony
- Gas Fireplace, Maple Cabinets, and Garden Tub
- Pre-Wired for COX High Speed Internet and Cable



▲ **KENSINGTON PATIO**  
1 BED | 1 BATH  
792 SQ. FT

▼ **REGENTS PATIO**  
1 BED | 1 BATH  
931 SQ. FT



▲ **HYDE PARK LOFT**  
1 BED | 1 BATH  
1,451 SQ. FT



▲ **MAYFAIRE LOFT**  
1 BED | 1 BATH  
1,548 SQ. FT



◀ **BRISTOL PATIO**  
2 BED | 2 BATH  
1,083 SQ. FT



▲ **ABBEY II**  
2 BED | 2 BATH  
1,375 SQ. FT

▶ **NOTTINGHAM**  
2 BED | 2 BATH  
1,218 SQ. FT



▶ **KNIGHTSBRIDGE LOFT**  
2 BED | 2 BATH  
1,466 SQ. FT



▲ **DORCHESTER PATIO & LOFT**  
2 BED | 2 BATH  
1,544 SQ. FT

▼ **OXFORD PATIO**  
3 BED | 3 BATH  
1,426 SQ. FT



▲ **ABBEY III**  
3 BED | 3 BATH  
1,589 SQ. FT



▼ **CAMBRIDGE LOFT & SOLARIUM**  
3 BED | 3 BATH  
1,833 SQ. FT



# Park Lane

APARTMENTS & TOWNHOMES

5900 SW 76th Court | Gainesville, FL 32608

[ParkLaneApts.com](http://ParkLaneApts.com)

(352) 641-3017



SCAN HERE  
TO APPLY



EQUAL HOUSING  
OPPORTUNITY